



Travel Service Inc., Hawaii
758 Kapahulu Avenue, Suite #220 ** Honolulu, HI. 96816
Phone No: (808) 739-9010 ** Fax No: (808) 735-0142 (TA#4988)
Email address: nandktravel@hawaiiantel.biz

Summer Hokkaido Tour

(June 23 – July 04, 2024)

**Highlights for the tour: 1 night Chitose, 2 nights in Hakodate,
1 night Noboribetsu, 2 nights Furano, 2 nights Asahikawa, and 2 nights in Sapporo (5 nights of onsen)**

Sunday, June 23 Honolulu – Sapporo (Chitose) via Tokyo/ Haneda

- 10:00a.m. Check-in at Japan Airlines DANIEL K. INOUE INTERNATIONAL AIRPORT, Terminal#2 Lobby #5, check-in area. Please have your valid passport and your original vaccine card ready. Nadine will give you your packet with JAPAN AIRLINES “E Ticket Receipt” & luggage tags prior to check-in. Due to tight airport security, you will be checking in individually or as a family. After check-in, please proceed to the TSA line.
- 12:50p.m. Depart on JAPAN AIRLINES FLT. #73 bound for TOKYO/ HANEDA.
A meal will be served one hour after take-off.
In-flight meals: LUNCH: Main entrée’: Beef or Chicken with salad, miso soup, & cookies
Prior to arrival: Croissant Sandwich with ice cream
Throughout the flight, you can enjoy JAL's SKY TIME (mixed peach & grape) drink , other soft drinks, assorted beers, wines, sake, coffee, tea, and green tea are complimentary.
Complimentary In-flight Movies like: English, Japanese, Chinese, & Korean and over 40 Music channels (You can even make your own Playlist), and limited games.

Monday, June 24 Tokyo/ Haneda - Sapporo/ Chitose

- 3:55p.m. We will be passing thru the International Date Line so you will be losing one day.
Arrival into Tokyo/ Haneda International Airport (Terminal #3). **Visit Japan Web (required) is a web service that people entering to Japan and Japanese returning back to Japan have to use for Immigration and Customs procedures in order to enter/return to Japan.**
After immigration, you need to go to the “electronic Japan Custom machine” to scan your passport and your QR Code, in order to go thru the “Electronic Line & Gate”.
Carts are free for your convenience, please pickup your own luggage(s) from the carousel at the baggage claim area. Go thru the “Electronic Line & Gate”.
We will have to go to the Interline Counter to check-in our luggages for flight to Sapporo/Chitose Airport. After dropping off your luggage, we will need to go downstairs to the 1st floor to take the “courtesy shuttle” to Terminal #1, for your flight on Japan Airlines.
Upon arrival at Terminal #1(Domestic), you will have time to shop & eat or buy musubi, sandwich, or bento to eat around your departure gate area.
- 7:45p.m. Depart on JAPAN AIRLINES FLT.#529 bound for SAPPORO/ CHITOSE AIRPORT.
- 9:15p.m. Arrive at SAPPORO/ CHITOSE AIRPORT.
Please pickup your own luggage(s) from the carousel in the baggage claim area. For your convenience please use the baggage cart for your luggage.
We will walk over to AIR TERMINAL HOTEL for 1 night stay.

Tuesday, June 25 Chitose – Hakodate, Hokkaido

- 6:00-8:00a.m. Buffet breakfast at hotel located on the 3rd floor.
- 8:15a.m. Check-out of the hotel.
- 8:20a.m. Please be at the hotel lobby area.
- 8:30a.m. Bus departs for Hakodate with couple stops along the way.
- 12:30p.m. We will be stopping at SHIKABE GEYSER PARK where you can feel the breath of nature through the power of the beating thermal heat. While resting your feet in a hot foot bath, you can watch the Miracle Show that will take your breath away with its 100-degree boiling water shooting 15 meters into the air every 10-15 minutes.

Nadine will give you a hand towel to wipe your feet.

Lunch on your own at your expense at Michi no Eki Shikabe.

Koita no Okazuya has their famous scallop curry rice, scallop curry udon or soba, shrimp tempura udon or soba, gyudon(beef bowl), beef udon or beef soba, and plain kake udon or soba. Prices ranges from 500-800 Yen(subject to change without any notice)



Shikabe Geyser Park



Ashiyu (Foot Onsen)



Onsen "Pon no Yu"

4:30p.m.

Check-in at LA'GENT STAY HAKODATE EKIMAE for 2 nights stay, a western style hotel opened in Dec 2019. It has natural onsen on the hotel property and connected with HAKOVIVA Shopping Mall.

The hotel is also located near JR HAKODATE TRAIN STATION and within walking distance to the HAKODATE MORNING MARKET. **coin laundry facility in the hotel **

After check-in, the rest of the evening at your leisure. (B)

Wednesday, June 26 Hakodate

6:00a.m.(starts) Buffet breakfast at RESTAURANT PREGALO on the 2nd floor of the hotel.

9:00a.m.

We will walk to famous Hakodate Asaichi (morning market). It opens from 5:00a.m. At the market, you will see lots of various seafoods, dried products, & fresh fruits. We recommend the shoyu butter sauté scallops (vacuum packed individually and the giant ika seen below) from Aoyama Suisan. Free shopping and lunch on our own at the morning market.



Hakodate Morning Market



Scallops



Fresh Seafood Bowl

12:30p.m.

Return back to the hotel on your own.

1:00p.m.

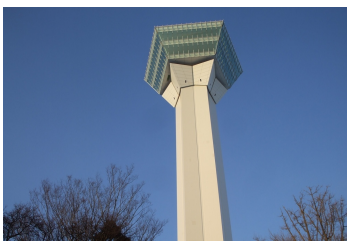
Bus departs for GORYOKAKU PARK and GORYOKAKU TOWER.

Goryokaku Tower overlooks the Goryokaku Fort and Mt. Hakodate, a small mountain, 334 meters high which offers great views of the city of Hakodate.

Drive-by MOTOMACHI, where there are unique western-influenced buildings, more than a century old, and traditional Japanese buildings still remain in the city to this day.

MT. HAKODATE ROPEWAY, it takes 3 minutes to get to the summit from the base station.

On a clear day in particular, the views from Mt. Hakodate is spectacular.



Goryokaku Tower



Goryokaku Park



Ropeway & the View Mt. Hakodate



4:30p.m.

Return back to the hotel. The rest of the day is at your leisure. (B)

****recommend to take overnighter bag or take 1 luggage per couple since we are staying overnight and the rest of the luggage will be stored underneath the bus****

Thursday, June 27 **Hakodate – Shikotsu/Toya – Noboribetsu**

- 6:00a.m.(starts) Buffet breakfast at RESTAURANT PREGALO on the 2nd floor of the hotel.
8:00a.m. Bus departs for SHIKOTSU- TOYA NATIONAL PARK and NOBORIBETSU. It takes 2 hours and 30 minutes so we will make a 5-4-4 stop along the way.
Showa Shinzan and Mt Usu are the major attractions of Shikotsu-Toya National Park.
Mt. Showa Shizan is a small volcano designated as a special natural monument.
11:45a.m. Japanese lunch at a ICHIBANKAN, local restaurant at Showa Shinzan.
12:45p.m. After lunch continue on to NOBORIBETSU ONSEN, one of the many well known resorts in Japan.
Noboribetsu is the largest “hot spring town” in Hokkaido.
1:35p.m. NOBORIBETSU DATE JIDAIMURA VILLAGE, a historical theme park devoted to the Edo Period, the most beautiful era in Japanese history. Every detail inside the park feels like you went back in time: the attendants wear traditional Japanese attire, the pathway is covered with cobblestones, and even the buildings look like you’re inside a movie set.



Date Jidaimura Village



Oiran Show



Ninja Show



Sanshoku Dango(dumplings)

- 2:05p.m. Oiran Show (30 minutes) at Japanese Culture Theater.
3:40p.m. Ninja Show(20 minutes) at Kasumi Ninja House.
We're able to view 2 shows: Oiran Show at 2:05pm for 30 minutes and Ninja Show at 3:40pm for 20 minutes
5:00p.m. Arrive at your hotel in Noboribetsu, 1 night stay at NOBORIBETSU GRAND HOTEL in the western style rooms. The hotel features 3 different onsens.



- 6:00p.m. Fabulous Buffet Dinner at the hotel with the group. After dinner, enjoy onsen. **(B, L, D)**

Friday, June 28 **Noboribetsu – Furano**

- 6:30-8:00a.m. Buffet breakfast at hotel.
8:45a.m. Check-out of your hotel.
9:00a.m. Bus departs for FURANO with couple stops along the way.
9:15a.m. JIGOKUDANI or "Hell Valley" a spectacular and appropriately named valley just above the town of Noboribetsu Onsen, which displays hot steam vents, sulfurous streams and other volcanic activity.
It is a main source of Noboribetsu's Onsen, hot spring waters.
Lunch at Shizen Taikan Shimukappu Michi no Eki: 2 – Salmon Musubi & Chicken Karaage Bento.
3:00p.m. Last stop, SHIRAHIGE no TAKI(Waterfalls), "White Beard Waterfall," is unusual for a Japanese waterfall, it flows from underground river. This waterfall is situated 600 meters above sea level.
5:00p.m. Arrive at NEW FURANO PRINCE HOTEL for 2 night stays. Western style hotel rooms with natural onsen facilities within the hotel premises. ** coin laundry facility in the hotel **
6:00p.m. Buffet dinner at the hotel. **(B, L, D)**

Saturday, June 29 **Furano**

- 6:30- 9:00a.m. Buffet breakfast at hotel.
9:30a.m. Sightseeing around Furano area.
First stop, TOMITA FARM, one of the oldest lavender fields in Japan. At their café, you can try their famous Melon Bread (inside this bread is cream containing Furano melon juice, baked in the shop), Lavender Milk Popsicle, and Lavender soft-serve ice cream.



Lavenders at Farm Tomita

Lavender Soft Serve

Melon Bread

Shikisai no Hill and it's tractor

Last stop, SHIKISAI no OKA (Hill), enjoy the colorful flowers and spectacular views in the Shikisai-no-oka flower garden while riding around Shikisai-no-oka and the surrounding areas on the popular Norokko tractor bus. Norokko is a very popular ride that takes a slow run through the park which is filled with the rich fragrance of flowers and offers spectacular views of the hills, Mt. Daisetsu, and the flower garden.

Lunch on your own at Shikisai no Oka. At the restaurant, they are serving “Venison (deer meat)” sausage wrap, curry rice, sandwich, & etc. They do have ramen and tonkatsu too.

Recommended lunch is local udon restaurant (using local ingredients) right across the street from our bus parking.

3:00p.m. Return back to NEW FURANO PRINCE HOTEL. Enjoy walking around the hotel area or going to the onsen before dinner.

6:00p.m. Buffet dinner at the hotel. **(B, D)**

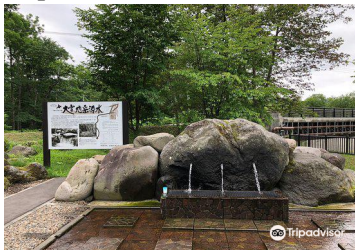
Sunday, June 30

Furano - Asahikawa

6:30- 7:30a.m. Buffet breakfast at hotel.

7:45a.m. Check out of the hotel.

8:00a.m. Depart for ASAHIKAWA via Kamikawa.



Taishetsu Asahidake Gensui Water

Hokkaido Ice Pavillion

A brief stop at TAISETSU ASAHIDAKE GENSUI PARK, to get some mineral rich spring water of Taishetsuzan Mountain. **Please bring your own empty plastic bottle container**

We will make a lunch stop along the way, lunch at your own expense.

After lunch, HOKKAIDO ICE PAVILLION. This is the first museum in the world to provide the chilling experience of Hokkaido throughout the whole year

Your last stop of the day will be AEON MALL WEST ASAHIKAWA, shopping complex has a supermarket & Starbucks on the 1st floor and food court & 100 Yen “Seria” on the 2nd floor.

5:00p.m. Arrive at ART HOTEL ASHIKAWA for 2 nights stay, located in the downtown area. 12-15 minutes walk or less than 5 minutes by taxi to the Asahikawa Aeon Mall.

After check-in, the rest of the day is at your leisure. **coin laundry facility in the hotel** **(B, D)**

Monday, July 01

Asahikawa

6:30-8:45a.m. Buffet breakfast at hotel.

9:00a.m. Full day tour of ASAHIKAWA.

9:30a.m. First stop, AINU KAWAMURA KANETO MUSEUM, Hokkaido's oldest museum of Ainu culture opened by Kaneto Kawamura. Which has protected and passed down the culture of the Ainu people for over 100 years Its exhibits contain approximately 500 artifacts of Ainu lifestyle and clothing. There's also Ainu clothing you can try on for commemorative photos.



Ainu Kawamura Kaneto Museum

Otokoyama Sake Selection

- 12:00p.m. Lunch on your own at MICHINO EKI ASAHIKAWA for lunch & shopping time where you can buy local products from Asahikawa.
- 2:00p.m. After lunch, OTOKOYAMA SAKE BREWERY a local sake brewed in spring water in Asahikawa. In 1977, it won Monde Selection award for Japanese sake. In addition, Otokoyama Sake Brewery won many gold medals in domestic and foreign liquor competition.
- 4:00p.m. Return back to Art Hotel Asahikawa. (B, D)
- 6:00p.m. Last dinner with the group and with Ms. Akiko Sasaki (our tour guide). If you have any gift to give to Ms. Sasaki, please give it to her on this night.
Buffet dinner at Restaurant Minori on the 15 th floor.

Tuesday, July 02 Asahikawa – Sapporo

- 6:30-8:30a.m. Buffet breakfast at your hotel.
- 9:15a.m. Check-out of hotel.
- 9:30a.m. Depart your hotel for SAPPORO with 2 stops along the way.
- 10:30a.m. We will make a stop at Sunagawa Highway Oasis (Service Area) for snacks, or shopping for local items to take home. Local favorites are yubari melon pure jelly, corn chocolates, and etc.
- 11:30a.m. Lunch on your own at Sunagawa Highway Oasis.
- 1:00p.m. Next stop at IWAMIZAWA PARK's ROSE GARDEN, the rose garden in Iwamizawa Park is the largest rose garden in Hokkaido. Approximately 630 varieties of roses can be seen during the peak from late June until mid-July. There's a snack bar next to restaurant serving "Rose Soft Ice Cream".



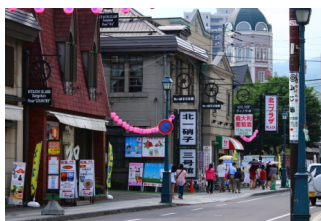
Iwamizawa Rose Garden

Sapporo Odori Park

- 3:30p.m. Before getting to the hotel, a brief stop at CLOCK TOWER and pass by ODORI PARK these are the symbol and landmark of Sapporo.
- 4:00p.m. After the tour, check-in at SAPPORO GRAND HOTEL (East Building) for 2 nights stay. This hotel is connected to STARBUCKS and walking distance to TANUKI KOJI SHOPPING ARCADE. Access the 1st-floor lobby from Sapporo Grand Hotel's exclusive basement entrance next to Exit 8 of the Sapporo Ekimae-dori Underground Walkway. It's about 15 minutes walk to JR Sapporo Train.
After check-in the rest of the day is at your leisure. (B)

Wednesday, July 03 Sapporo – Otaru – Sapporo

- 6:30-8:45a.m. Buffet breakfast at hotel.
- 9:00a.m. Depart the hotel. Today we will go sightseeing around Sapporo & Otaru.
- 10a.m-1:00p.m. 1st stop is OTARU, a small harbor town. Its main attraction is its charming canal district. Glass is one of the reputable local industries, view the beautiful glasses at the famous Kitaichi Glass Shops known for their dripless shoyu bottles and color changing ones too.
Some free time to walk around Otaru and check-out some tasty scallops cooked right in front of you at the seafood shops. 3 to 12 flavor ice cream shops, freshly made senbei, and couple shops with Otaru Japanese Sake. We will give you some time to have lunch and shop along the canal area. Otaru is also known for "sushi" and seafood.



Otaru Kitahachi Glass Otaru Main Street for shopping and lunch Royce Chocolate “Hands On Experience”

- 2:00-4:00p.m. Your last stop will be at the ROYCE CACAO & CHOCOLATE TOWN (opened on Aug 4, 2023)
The adjacent ROYCE' Town Factory Shop offers a wide variety of products, including over 200 types of chocolates and baked confections, as well as this shop limited “Farm to Bar” chocolate, breads, and soft-serve ice cream, ROYCE' Town Station-related products*, and unique merchandise that make great souvenirs.
You will have the opportunity to do “hands on experience” making your own chocolate bar.
- 5:00p.m. After the tour, return back to the hotel.
You will have some time to go shopping and dinner on your own. (B)

Thursday, July 04 Sapporo/ Chitose – Tokyo/ Haneda - Honolulu

- 6:30-9:00a.m. Buffet breakfast at hotel.
- 9:45a.m. Checkout of the hotel. Please don't forget your passport.
- 10:00a.m. Depart the hotel for Chitose Airport with one stop at AEON MALL CHITOSE.
- 11:00a.m.-12:30p.m. This shopping complex has a supermarket, food court, restaurants on the 1st floor and 100 Yen “Seria” on the 2nd floor.
- 12:45p.m. Arrive at Chitose Airport, take elevator to 2nd floor, departure lobby.
- 1:00p.m. Check-in at Japan Airlines, please have your passport and “E” ticket ready.
- 4:00p.m. Depart on Japan Airlines Flt.#516 bound for Tokyo/ Haneda.
- 5:35p.m. Arrive Tokyo/ Haneda Domestic Terminal #1. You will not pick-up your luggage but you will need to go thru the domestic baggage & arrival area, in order to exit the “Domestic” Terminal.
Take the courtesy shuttle to TOKYO/ HANEDA INTERNATIONAL AIRPORT, Terminal #3
Upon arrival at the Tokyo Haneda International Airport. You will have some free time to do last minute shopping or grab something to eat.
- At the Tokyo/ Haneda International Airport:**
3rd floor is your departure lobby **4th & 5th floor are limited restaurants and shops
Go thru security & immigration require before getting to your designated gate for your departure flight.
- 9:00p.m. Depart on Japan Airlines Flt.#074 bound for Honolulu, Hawaii.
- 9:55a.m. Arrive at Honolulu International Airport, upon arrival, immigration and U.S. Customs procedures.
Due to crossing the International Date Line, we will be arriving back to Honolulu on the same day, Thursday, July 4th.

There's no US Custom form to be filled but you still have to go thru immigration and US custom.

**** Subject to change without any notice ****

Please sign up by Feb 23, 2024 or First come First serve **Full Payment is due on March 22, 2024**

Tour cost is based on:

Based on 16-25 full paying tour members / Max: 25 full paying tour members

Exchange rate: Japanese Yen 142-143 per \$1.00US dollar

Group Airfare(based on 10 people or more on Economy Class Seating and Premium Economy Seats for the International Flights) is based on tariffs in effect on 12/12/2023

Round trip airfare to Sapporo/ Chitose from Honolulu & back via Haneda on JAL.

Tour cost is subject to change according to any taxes and fuel surcharge increases on the airfare and the rate of the exchange between US dollar and Japanese yen.

Final payment, check payment only.

Upgrade to Premium Economy Seats for the International Flights (from Honolulu to Haneda and back)

\$1000.00 additional per person (limited to 10 seats and need to fill the 10 seats to receive the group airfare).

As a Premium Economy Class passenger, you will be able to relax prior to your flight's departure in the spacious comfort of the JAL Sakura Lounge in Honolulu and on your return at Tokyo/ Haneda International Airport.

No deviation & upgrade grades on the group airfare. Please inquire about JAL's Business Class Seats.

CANCELLATION POLICY for the Land Portion:

91 days prior to departure – Full refund

90-45 days prior: 50% cancel fee of the tour price, per person charge

44-30 days prior: 75% cancel fee of the tour price, per person charge

29 days prior or less: 100% cancel fee of the tour price, per person, no refund

****Any additional individual arrangement may not be refundable, Please check with N & K Travel****

CANCELLATION POLICY for the Air Portion with Japan Airlines Group Seats:

No deviations and no upgrades are allowed. Check payment only.

90 days prior to departure - \$100.00 per person

Once ticketed/ to make a name change, there's an exchange fee

Once ticketed/ \$400.00 cancellation penalty fee applies per person

Once ticketed/ any changes for the return date, \$350.00 penalty fee + fare difference

TRAVEL INSURANCE: (Optional)

To protect against cancellation charges, optional travel insurance is recommended and is available thru N & K Travel. Rates are subject to change. Coverage and rates for travel insurance may vary by state.

For more information, please call our office or email us.

TOUR COST:

**** Exchange rate: 142-143 Yen per 1.00 U.S. dollars **based on 16 people min /25 max****

TWIN/ TRIPLE OCCUPANCY: \$4525.00 per person

SINGLE OCCUPANCY: \$5245.00 per person

Premium Economy:

TWIN/ TRIPLE OCCUPANCY: \$5525.00 per person

SINGLE OCCUPANCY: \$6245.00 per person

Land Cost Only: Individual arrangements to meet the group are not included like the transportation on 7/04 from Sapporo Grand Hotel to Chitose Airport.

Based on 16-25 full paying tour members:

TWIN/ TRIPLE OCCUPANCY: \$3325.00 per person

SINGLE OCCUPANCY: \$4045.00 per person



Travel Service Inc., Hawaii
758 Kapahulu Avenue, Ste#220 * Honolulu, HI. 96816**
Tel: (808) 739-9010 Fax: (808) 735-0142 TAR#4988
Email address: nandktravel@hawaiiantel.biz

GENERAL CONDITIONS for Tours to Okinawa & Japan

TOUR INCLUDES:

Hotel accommodations, transfers, sightseeing, and round trip air transportation from Honolulu, economy seating.

Adjustments will be made if there is increase in fuel surcharges and any fluctuation in exchange rates between US Dollars and Japanese Yen.

AIR TRANSPORTATION:

Air service within tours is included except for people buying the land portion only. Airfare inclusive rates are based on advanced purchase and may be subject to certain airline restrictions and penalties. Adjustments will be made if there is any increase on taxes.

MEALS:

Meals included are noted on the brochure or itineraries. All other meals are the responsibility of the individual. Meal codes are: **B** – Breakfast, **L** – Lunch, **D** – Dinner.

RESERVATIONS & DEPOSITS:

Reservations should be made as soon as possible by filling out the application form and sending a deposit of \$100 per person. Reservations are based on a first come first serve basis. Returned check fee of \$25.00 per check.

CANCELLATION POLICY for the Land Portion:

91 days prior to departure – Full refund

90-45 days prior: 50% cancel fee of the tour price, per person charge

44-30 days prior: 75% cancel fee of the tour price, per person charge

29 days prior or less: 100% cancel fee of the tour price, per person, no refund

****Any additional individual arrangement may not be refundable, Please check with N & K Travel****

CANCELLATION POLICY for the Air Portion with Japan Airlines Group Seats:

No deviations and no upgrades are allowed. Check payment only.

90 days prior to departure - \$100.00 per person

Once ticketed/ to make a name change, there's an exchange fee

Once ticketed/ \$400.00 cancellation penalty fee applies per person

Once ticketed/ any changes for the return date, \$350.00 penalty fee + fare difference

TRAVEL INSURANCE: To protect against cancellation charges, optional travel insurance (cancellation, health, luggage) is recommended and is available thru N & K Travel.

Call for more details.

MILEAGE:

N & K Travel will give the mileage number on your tour form to the airline, however, we will not be responsible for missing credit. Also, if you are not a member of mileage program, we will not be responsible for your enrollment.

GRATUITIES:

Gratuities for the bilingual local guide, bus driver & guide are **not included**. The recommended gratuity for the local Japanese-English Speaking Guide is 500 Yen per person per day and for the bus driver that will be with the group, 2 days or more, 250 Yen per person per day.

PASSPORTS:

All clients are reminded that a valid passport is necessary in all cases. The cost of obtaining these documents will be the responsibility of the traveler. The organizer assumes no responsibility whatsoever, should a client, for any reason be refused entry into any particular country, and the subsequent costs entailed will have to be met by traveler in accordance with obligations that the organizer has in virtue of the contracts held with third parties.

Passport must be valid within 6 months at time of departure.

A photo copy of your passport is require for all tours.

IF THE TOUR OPERATOR CANCELS:

Should N & K Travel Service, Inc. cancel a departure for any reason, your money will be fully refunded.

CHANGES IN ITINERARIES:

N & K Travel Service, Inc. will make every effort to operate all tours as disclosed in this document.

However, circumstances may arise which would require an adjustment to the tour. We will however do all that is possible to avoid such changes, but we must reserve the right to make such modifications if they are determined to be necessary.

RESPONSIBILITY:

This travel agency and/or its agents, sub-agents, sub-offices and affiliates act only as agents for the owners and contractors providing means of transportation or other services and all tickets and/or vouchers are issued subject to any terms and conditions under which such means of transportation or other services where offered or provided. The issuance and acceptance of such tickets and/or vouchers shall be deemed to be consent to the further conditions that this travel agency, its agents, sub-agents, sub-offices and affiliates shall not become liable or responsible in any way in connections with such means of transportation or other services, or for any loss, injury or damages arising from the default of a tour operator/carrier, lost/damaged baggage, trip cancellation, bad weather, natural disaster or other acts of God. We reserve the right to cancel any tour 45 days or more prior to departure date. All rates in this brochure/itinerary are subject to change without notice.



758 Kapahulu Avenue Suite 220 Honolulu, Hawaii 96816 *** Tel: (808) 739-9010 TAR#4988

Email address: nandktravel@hawaiiantel.biz

Summer Hokkaido Tour

(June 23 – July 04, 2024)

PLEASE TYPE or PRINT: (Name as it appears on passport)

Mr. Mrs./Ms. _____
Last First Middle Name

Address _____
Street City State/Zip code

Business or Cellular Phone: _____ Home Phone: _____

Occupation: _____ Birth Date: _____

Passport No.: _____ Issue Date: _____

E-mail address: _____

Japan Airlines or Hawaiian Airlines Mileage: _____ TSA Precheck # _____
Global # _____

In case of emergency, contact: _____

Relationship: _____ Phone: _____

Rooming: Single _____ Twin(2 beds) _____ Triple(3 beds) _____

Requested roommate(s): _____

I am also signing up for:

Mr. / Mrs. / Ms. _____

Occupation: _____ Birth Date: _____

Passport No.: _____ Issue Date: _____

Japan Airlines or Hawaiian Airlines Mileage: _____ TSA Precheck # _____
Global # _____

Please sign up by Feb 23, 2024 Full Payment is due on March 22, 2024

Tour Cost: based on 16-22 full paying tour members: ** Exchange rate: JPY 142- 143 per U.S. \$1.00 Dollar **

TWIN/ TRIPLE OCCUPANCY: \$4525.00 per person: _____ PREMIUM ECONOMY:\$5525.00 _____

SINGLE OCCUPANCY: \$5245.00 per person: _____ PREMIUM ECONOMY: \$6245.00 _____

Please make checks payable to N & K TRAVEL SERVICE, INC. A deposit of \$100.00 per person require to Hold reservation.

Final payment, check payment only. Credit card payment, 5% credit card fee will be added to the final balance amount.

Would like purchase travel insurance? Yes: _____ No: _____ (further information please call the office)

I/We undersigned have read carefully and understand the General Conditions pertaining to the above stated tour and agree to these conditions. All information will remain confidential.

Signature: _____ Date: _____